



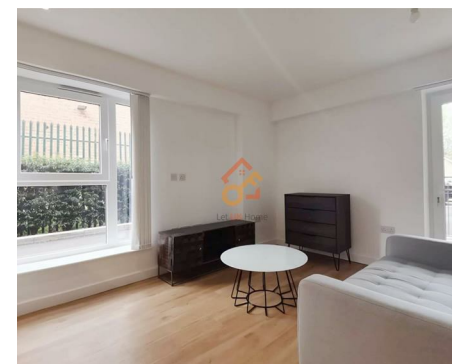
Let **UK** Home

1 Bedrooms

Flat - Studio

Located in London

£260,000



[info@letukhome.co.uk](mailto:info@letukhome.co.uk)

<https://www.letukhome.co.uk/>

01795 358 886



# 13 Beaufort Square London

NW9 4FH



Let UK Home are excited to offer this spectacular studio in the heart of Fairbank House part of the Beaufort Park.

The flat comprises a spacious open kitchen with a stylishly attached dining area, a bright living/bedroom area leading to a spacious private terrace, and one modern bathroom.

The exclusive, residents-only spa will be home to a large fitness studio, fully-equipped gym, indoor swimming pool, sauna and jacuzzi. Furthermore, residents will also benefit from a concierge and an unrivalled selection of shops, bars, restaurants, leisure facilities and beautiful courtyards.

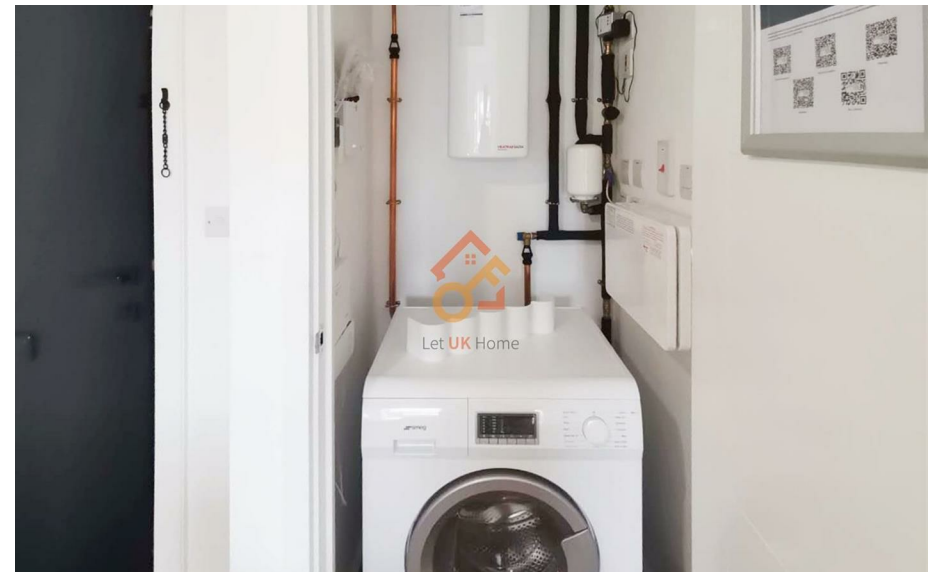
The apartment is close to Hendon, Mill Hill, Golders Green and Hampstead Heath, and is also close to several shopping places including Brent Cross Shopping Center, O2 Center and the fashionable Westfield Shopping Center.

The apartment is within walking distance of Colindale subway station, Middlesex University, and can be quickly reached by car to Central Saint Martins, University College London, The London School of Economics and Political Science, King's College London.

# 13 Beaufort Square London

£260,000 Leasehold

- Ground Floor
- 24h Security
- The Gym
- The Spa
- Concierge Service
- Swimming Pool
- Sauna & Steam Room
- Treatment Room





- Studio	30.0 sq m	323 sq ft
Living Space/Bedroom	4.94m x 4.16m	16' 2" x 13' 8"
Terrace	8.1 sq m	87 sq ft



Let **UK** Home

3F 2 Eastbourne Terrace  
Paddington  
London  
W2 6LG

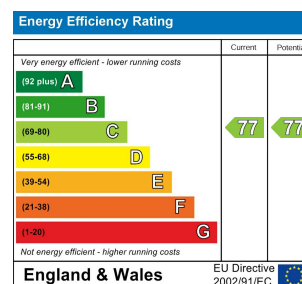
01795 358 886

info@letukhome.co.uk

**Council Tax Band:**

**Local Authority:**

Agents Note: Whilst every care has been taken to prepare these particulars, they are for guidance purposes only. All measurements are approximate and are for general guidance purposes only and whilst every care has been taken to ensure their accuracy, they should not be relied upon and potential buyers/tenants are advised to recheck the measurements.



<https://www.letukhome.co.uk/>